

WIRELESS LOCATION SYSTEM - Testkit



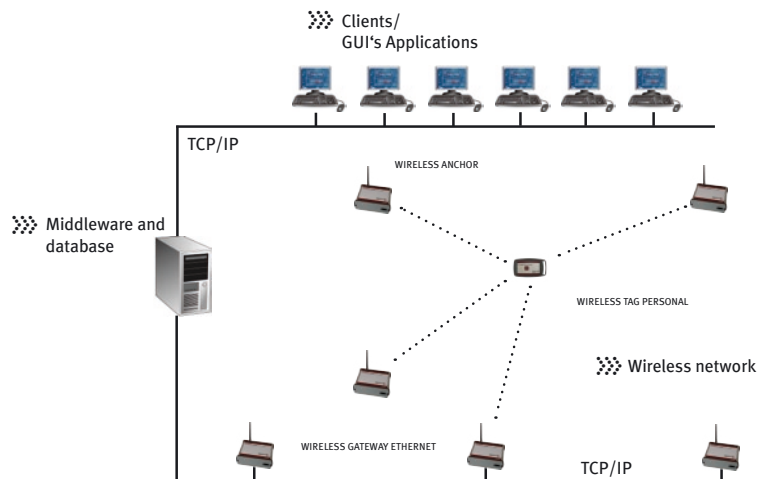
- ❖ Localization of persons or objects
- ❖ Signal propagation measurement (RTOF)
- ❖ Low influence through environment
- ❖ Ready to use
- ❖ Your start-up for your application

WIRELESS LOCATION SYSTEM - Testkit

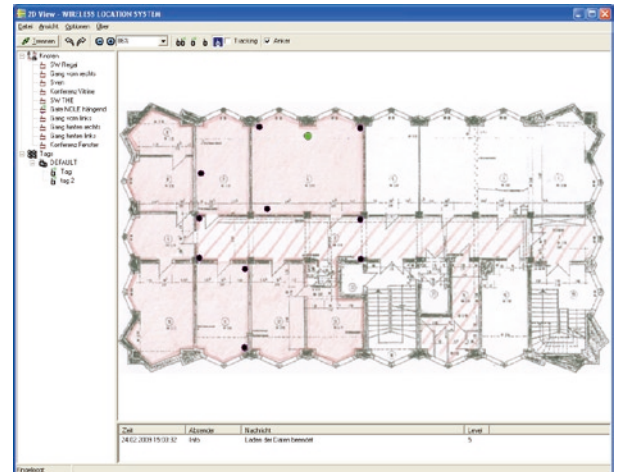
Generally	The WIRELESS LOCATION SYSTEM - Testkit is an easy to use localization system, which can be used for feasibility studies as well as for tests in application environment. It contains products out of Agilion's WIRELESS LOCATION SYSTEM which further could be used for bigger installations.	
Content	Hardware <ul style="list-style-type: none"> - 1x WIRELESS GATEWAY ETHERNET - 5x WIRELESS ANCHOR - 1x WIRELESS TAG HANDHELD - 7x Antennas Omni/2.1dBi/SMA - 6x Power supply for WIRELESS GATEWAY ETHERNET and WIRELESS ANCHOR - 2x 9V battery for WIRELESS TAG HANDHELD - 1x Network cable (Cross-Over) - 1x Bosch digital laser rangefinder for a easy adjustment - for free! 	Software <p>Agilion localization and communication server applications for the determination of position and tracking within the WIRELESS LOCATION SYSTEM. Licence for 2 mobile Tags included.</p> <p>Server applications:</p> <ul style="list-style-type: none"> - Microsoft SQL Server 2005 Express Edition - Agilion Network Communication Service - Agilion Network Management Service - Agilion Localization Service - Agilion Client Communication Service <p>Administration tools:</p> <ul style="list-style-type: none"> - Agilion Network Configuration - Agilion Localization Configuration <p>Management and visualization:</p> <ul style="list-style-type: none"> - Agilion System Management - Agilion 2D View <p>Requirements:</p> <ul style="list-style-type: none"> - Microsoft Windows 2003 Server or Microsoft Windows XP
Ordering options [Item-No.]	WIRELESS LOCATION SYSTEM - Testkit [6021901]	

we make less wire ...

 **wireless**



Structure of the WIRELESS LOCATION SYSTEM



Agilion 2D View

WIRELESS LOCATION SYSTEM - components

WIRELESS ANCHOR

The anchor nodes are fixed at a steady position in the localization network. They are basing points for positioning and could be used for forwarding of position information as well.



WIRELESS GATEWAY ETHERNET

Same as anchor nodes gateways are basing points in the localization network. Furthermore they are the interface between the IT infrastructure (e.g. Ethernet) and the wireless localization network. The IT infrastructure is used for the exchange of localization information and application specific data between the wireless localization network and the localization server. The use of several gateways is recommended in larger localization networks for larger amount of mobile tags and highest availability of position information.



WIRELESS TAG HANDHELD

The mobile tags will be located in the wireless network. People, vehicles and devices could be equipped with those tags. The transmission of additional application specific data from and to the mobile tags is also possible.



WIRELESS LOCATION SYSTEM - Software

The position calculation of the mobile tags is done on the localization server. The server has interfaces for access to position information and application specific data. Those interfaces are used in visualization systems, logistics systems, operation planning systems and navigation systems. Optional supported interfaces are typical databases (SQL-Server), CSV and TCP/IP.

Position information of mobile tags are shown in the Agilion 2D View. Images of terrain surveys, floor plans, 2D/3D models (CAD, VRML, ...) or satellite images improve the representation of positions. Management tools provide administrative access to the components of the network.



WIRELESS LOCATION SYSTEM - Accessory

Antennas, Power supply, Network cable, Digital laser rangefinder

